



EROS ELEVATORS & ESCALATORS PRIVATE LIMITED

405, Bharat Ind. Estate, Tokarshi Jivraj Road,
Sewree, Mumbai - 400 015, INDIA.
Tel.: 022 2413 2425, 2414 3431
Fax : (91-22) 2415 3192
CIN No.: U31909MH2010PTC200179

<http://www.eroselevators.com>

**PASSENGER ELEVATOR
ERO-D-MRL/MR**

Note : Because of restrictions in printing technology, there will be slight difference between colors in this catalogue and actual material and color.

The brochure is only for your reference. Please refer to the respective technical documents. Subject to change without notice.

Fourth - generation technologies, delivered a new riding experience

The fourth-generation green energy-saving permanent magnet synchronous traction machine

Save more energy than the traditional traction machine.

Reduce the elevator's running cost.

Large torque, low noise, maintenance-free.

Compact structure, convenient installation, save machine room space.

Automatic over-speed protection function of permanent magnet synchronous technology, making the elevator more safe and reliable.

Save 40% energy compared with the traditional traction

Large torque, low noise, maintenance-free

Compact structure, convenient installation, save machine room space

Advantages

Military standard 32-digit system platform

Military standard, reliable and efficient transmission of CPU controlled data and information, strong anti-jamming capability.

Merging MCU and fieldbus technology together, improves the safety and stability of the control system.

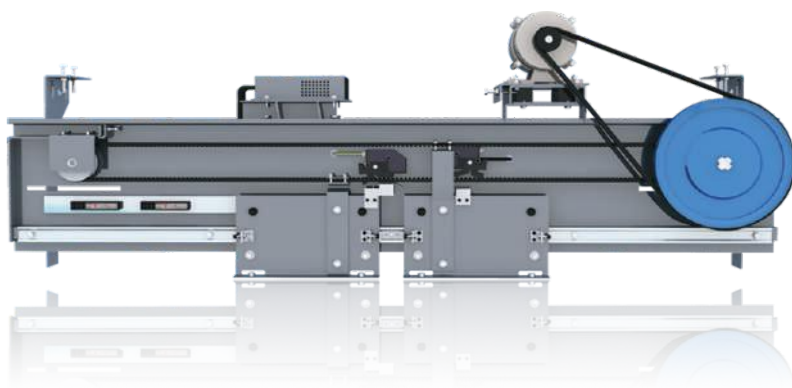
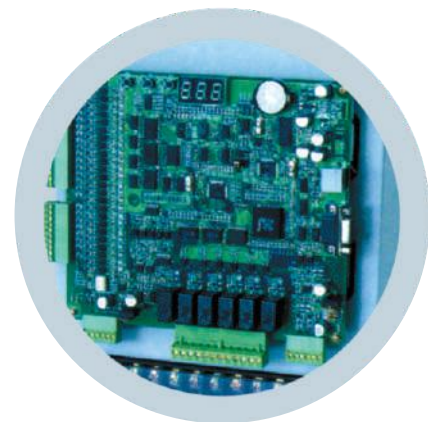
Introducing CAN fieldbus technology, decreasing burden of the main control system, increasing the safety of the system.

Applying direct stop technology, giving a perfect sense of comfort.



VVVF digital variable frequency drive

The elevator's driving system applies variable frequency speed regulation technology, which makes the elevator's control more intelligent, improves the elevator's drive control performance, effectively saves energy and decreases loss, ensures stable and efficient run.



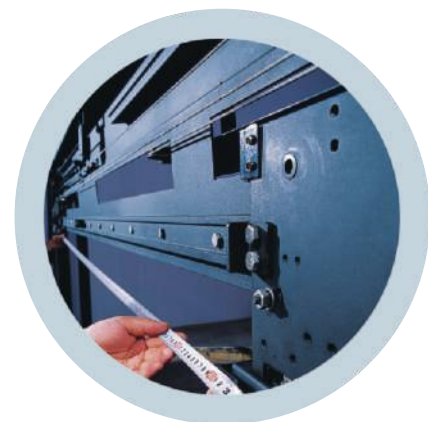
VVVF variable frequency door operator system

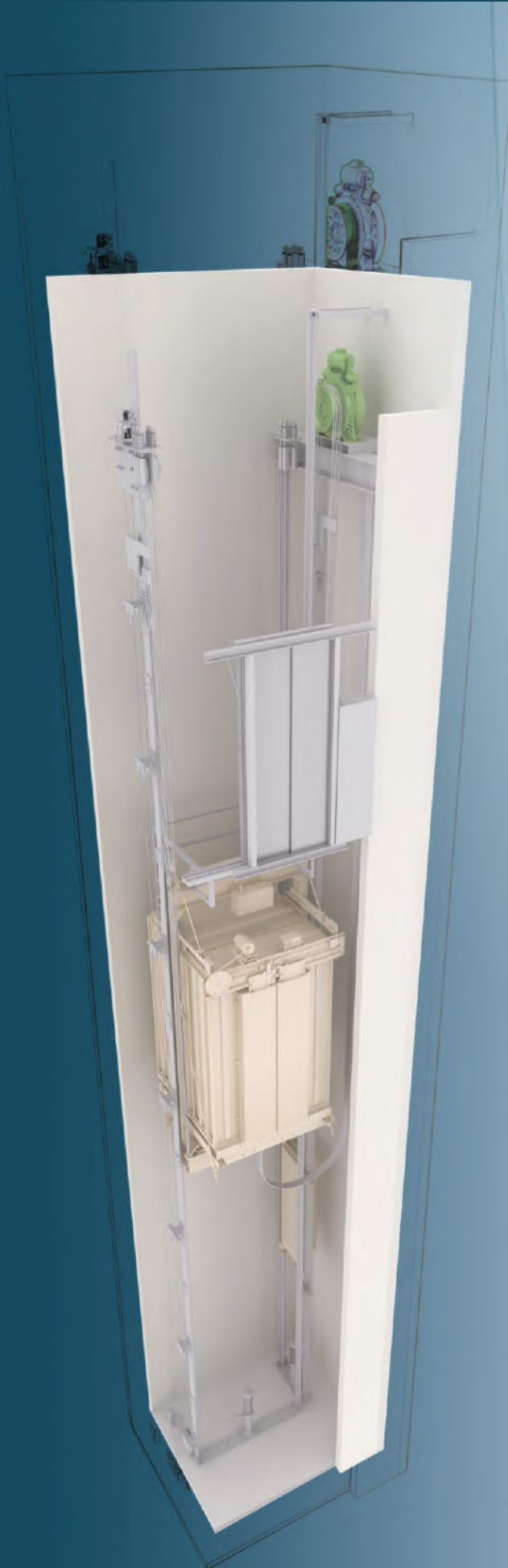
Faster opening and closing times.

Continuous optimization of door speed, automatically adjusting the operating curve.

Sine wave drive, control accuracy is one over ten thousand, low noise.

Automatic initial learn run, no mechanical contact points, reduces failure of door system.



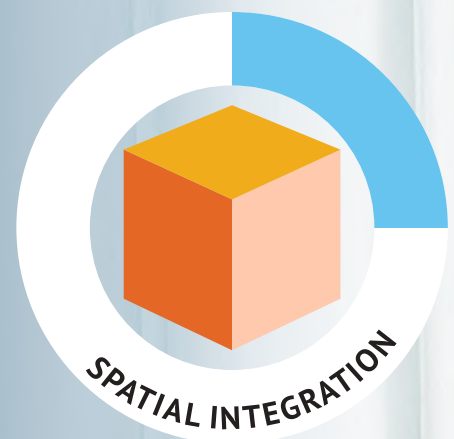


ERO-D-MRL

Industry-leading MRL technology

Ultra-thin traction machine in shaft side wall, the controller inside the top floor, saves the machine room area, architectural space and cost.

Applies industry-leading permanent magnet synchronous technology, by energy conservation and environmental protection and remarkable drive performance, it saves architectural space and cost, providing elevator solutions of high space value to high-rise residential buildings, office buildings, hotels, office, schools and various public places.



Effectively save machine room area

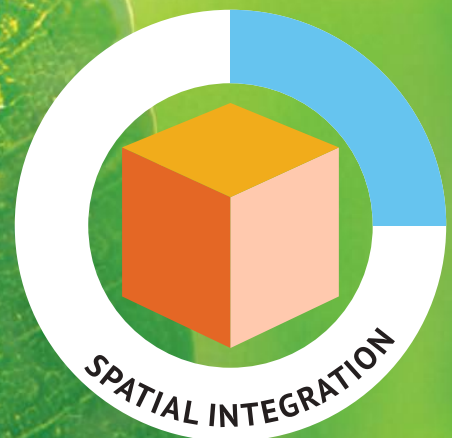


EROS ELEVATORS™



ERO-D-MR

Using latest Nano technology machine room is reduced to hoistway size, saving cantilever areas in machine room for better utilization



Effectively save machine room area

Standard car of passenger elevator

◀ D18105

- Celling : D58002 (Arched acrylic lighting decoration, mirror St. St. frame)
- Car Wall : Hairline St. St.
- Car Door : Hairline St. St.
- Floor : PVC (D61003)
C.O.P.D36127



D58002

Central part : Arched acrylic lighting decoration
Surroundings : Mirror St. St. frame



Main floor jamb : Hairline st. st. narrow jamb

D36127 D35129

Hairline St. St. faceplate,
dot matrix display

Decoration of passenger elevator

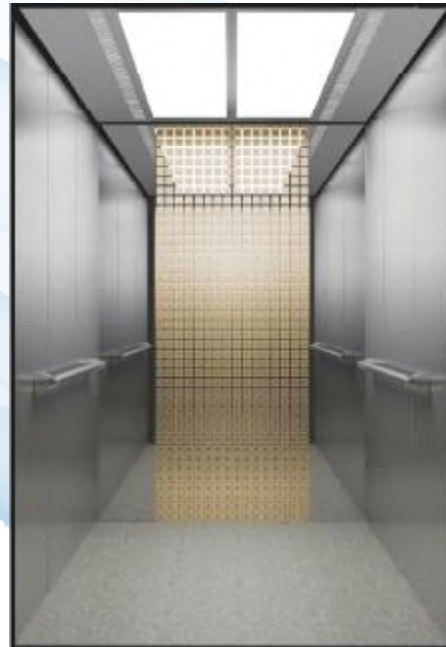


◀ D18202

- Ceiling : D58009 (Central part image arch ceiling, mirror St. St. frame with down light at two sides)
- Car Wall : St. st. hairline with central panel on all 3 sides of mirror finish attached etched.
- Car Door : Hairline St.St.
- Handrail : St.st.single tube
- Floor : PVC (D61002)

▶ D18706

- Ceiling : D58017 (Hairline st.st., acrylic)
- Car Wall : Rear wall (center panel of etched mirror finish and additional panels of mirror finish) side walls of st.st.hairline finish.
- Car Door : Hairline st.st.
- Handrail : D77010 (Hairline st.st.)
- Floor : PVC (D61019)



Observation elevator



◀ D16810

Ship shape observation elevator

- Upper/lower shades : Hairline / Mirror St.St.finish
- Ceiling : Stainless steel frame with glass, light strip and down lights.
- Car wall : Hairline St.St.frame with ground glass
- Handrail : Stainless steel round handrail
- Floor : PVC (optional: marble)

▶ D16911

Square observation elevator

- Upper/lower shades : Steel plate backed enamel
- Sightseeing wall : Glue-compressed glass
- Ceiling : Mirror St. St. acrylic lighting decoration with down lights
- Car wall : Hairline St.St.
- Handrail : Stainless steel round handrail
- Floor : PVC (optional: marble)





Observation elevator



◀ D16906

Square observation elevator (rear wall sightseeing)

Upper/lower shades :	Hairline St.St.
Sightseeing wall :	Glue-compressed glass
Ceiling :	Mirror St. St. LED light, acrylic lighting decoration
Car wall :	Hairline St.St.
Handrail :	Stainless steel round handrail
Floor :	PVC (optional: marble)

▶ D16007

Semi-circular observation elevator

Upper/lower shades :	Etched St.St.acrylic
Sightseeing wall :	Glue-compressed glass
Ceiling :	Steel plate baked enamel with acrylic lights,LED light.
Car wall :	Hairline St.St.
Handrail :	Stainless steel round handrail
Floor :	PVC (optional: marble)



Observation elevator



◀ D16008 Semi-circular observation elevator

- Upper/lower shades : Ti-gold etched, steel plate baked enamel
- Sightseeing wall : Glue-compressed glass
- Ceiling : Steel plate backed enamel, acrylic lighting decoration.
- Car wall : Ti-gold mirror etched St. St.
- Handrail : Ti-gold St. St.
- Floor : PVC (optional: marble)

▶ D16809 Diamond shape observation elevator

- Upper/lower shades : Ti-gold hairline etched St. St.
- Sightseeing wall : Glue-compressed glass
- Ceiling : Mirror St. St. with acrylic lighting decoration, LED Light
- Car wall : Ti-gold etched St. St.
- Handrail : Ti-gold St. St.
- Floor : PVC (optional: marble)



Landing door series



D20520

Door Model : D20520
 Door Material : Mirror etched st. st.
 Narrow jamb or jamb material : Mirror st. st.



D20511

Door Model : D20511
 Door Material : Mirror etched st. st.
 Narrow jamb or jamb material : Mirror st. st.



D20706

Door Model : D20706
 Door Material : Ti-gold etched st.st.
 Narrow jamb or jamb material : Mirror st. st.



D20709

Door Model : D20709
 Door Material : Ti-gold etched St. st.
 Narrow jamb or jamb material : Ti-gold mirror st. st.



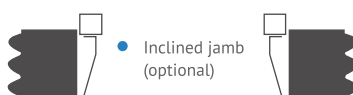
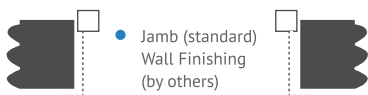
D20710

Door Model : D20710
 Door Material : Ti-gold etched St. st.
 Narrow jamb or jamb material : Ti-gold mirror st. st.



D20722

Door Model : D20722
 Door Material : Ti-gold mirror etched St. st.
 Narrow jamb or jamb material : Ti-gold mirror st. st.



Singalizacion - Embedded

C.O.P.



D36172
Standard

Embedded L.O.P.



D35175
Simplex



D35176
Duplex

Direction lantern



D35035



D35036

Surface mounted L.O.P.



D35117
Simplex



D35118
Duplex

Hall horizontal indicator



D35131

C.O.P. for the disabled



D36032

L.O.P. (No indicator)



D35030

Singalization - Embedded

C.O.P



D36127

Embedded L.O.P



D35129
Simplex



D35128
Duplex

Direction lantern



D35035



D35036

Surface mounted L.O.P



D35117
Simplex



D35118
Duplex

Hall horizontal indicator



D35131

C.O.P for the disabled



D36032

L.O.P (No indicator)



D35030

Singalization - Embedded

C.O.P.



D36237

Optional C.O.P LCD

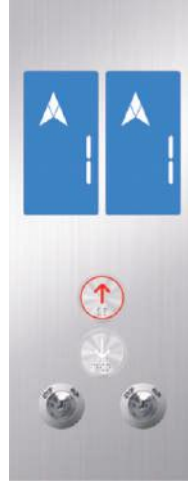


7" Picture type LCD display

Embedded LO.P



D35251
Simplex



D35252
Duplex

Direction lantern



D35050



D35035

Hall horizontal indicator



D35239
Blue background white LCD display

Surface mounted L.O.P



D35219
Simplex



D35220
Duplex



Optional 7" Picture type LCD display



D35296
Surface mounted hall horizontal indicator, blue background white LCD display

C.O.P for the disabled



D36032

LO.P (No indicator)



D35030

Singalization - surface mounted

C.O.P



D36161
Hairline St.St. faceplate, dot matrix display

Surface mounted L.O.P.



D35165
Simplex



D35166
Duplex

L.O.P. (No indicator)



D35062

Hall horizontal indicator



D35063

Glass panel combination



D36269



D35167



D36223



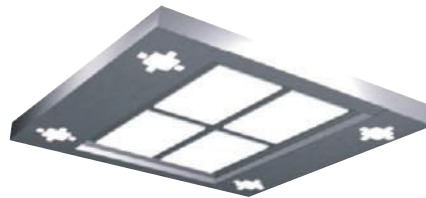
D35125

Glass panel, touch push button, 7" picture type LCD display

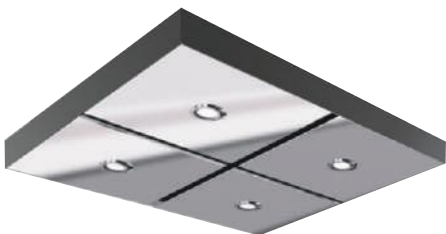
Ceiling Series



D58002
Central part : Arched acrylic lighting decoration
Frames around : Mirror st.st. frame



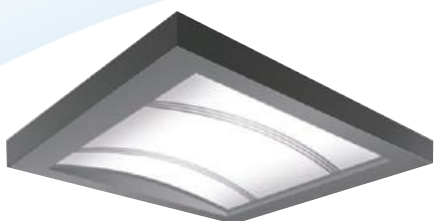
D58007
Central part : Matt acrylic lighting decoration
Frames around : Mirror st.st. frame, acrylic cover at four corners



D58012
Mirror st.st. frame



D58015
Mirror st.st. frame



D58005
Central part : Arched acrylic lighting decoration
Frames around : Mirror st.st. frame



D58027
Central part : Acrylic lighting decoration
Frames around : Mirror st.st. frame with down light



D58028
Central part : Acrylic lighting decoration
Frames around : Mirror st.st. frame with down light



D58011
Mirror st.st. acrylic lighting decoration

Handrails



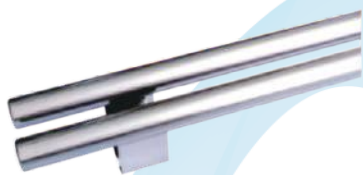
D77102
Hairline St.St. flat handrail



D77103
Ti-gold St.St. flat handrail



D77005
Hairline St.St. round handrail



D78006
Hairline St.St. flat handrail



D77007
Ti-gold St.St. round handrail
Central part solid wood



D77009
Ti-gold mirror st.st. round handrail

Flooring

PVC Floor



D61001



D61002



D61003



D61010



D61011



D61012

Marble Floor



D62C06
Beige marble



062007
Brown and
beige marble



D62021
Light grey Marble



D62022
Light-brown and
Sunny Beige Marble

Painted steel color



DS001
Camel gray



DS002
Yellowish Gray



DS003
Apple Green



DS005
Sky blue

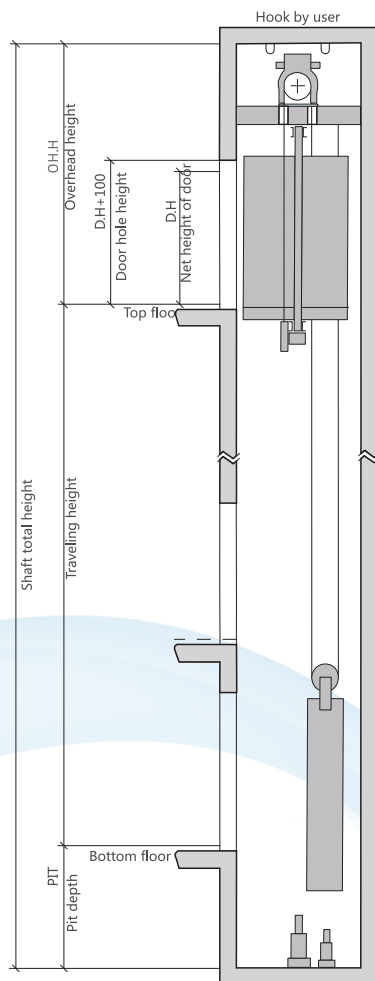


DS006
Deep nutmeg green

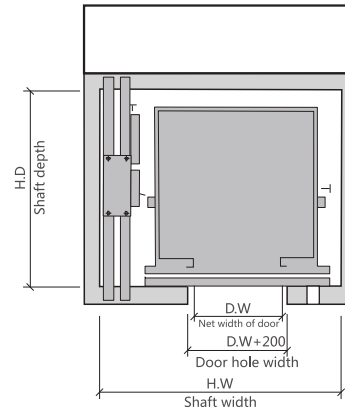
ERO-D-MRL

construction parameters

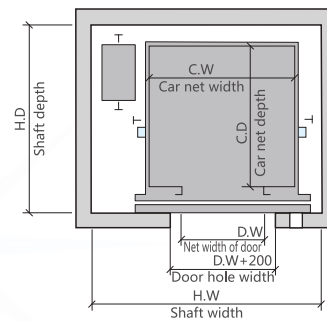
Hoistway vertical layout



Top floor plan layout



Hoistway plan layout

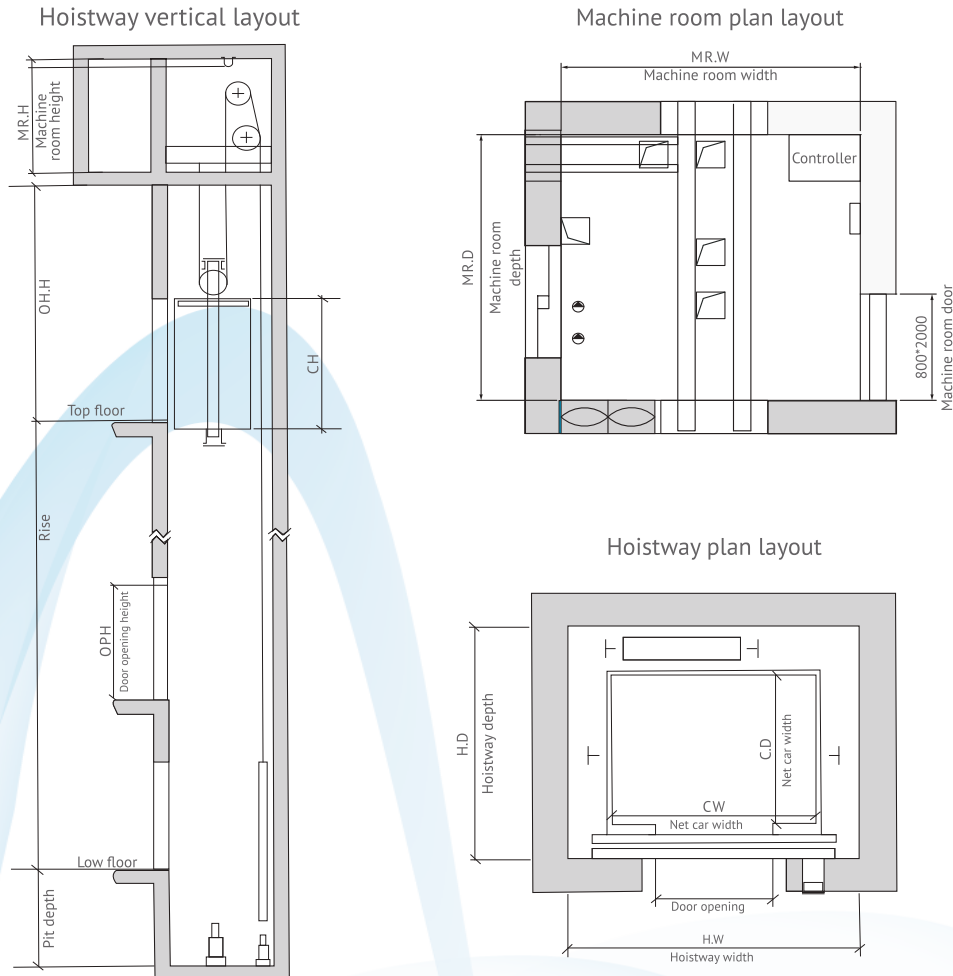


(人) Persons	(kg) Rated capacity	(m/s) Rated speed	Net size of car C.W x C.D	(mm) Net size of door D.WxD.H	(mm) Shaft size		
					2P Central opening	H.W x H.D	O.H.H
8	630	1.0	1400x1100	800x2100	2300x1800	4500	1500
		1.5/1.75				4700	1600
10	800	1.0	1400x1350	800x2100	2300x1900	4500	1500
		1.5/1.75				4600	1600
13	1000	1.0	1600x1400	900x2100	2500x2000	4500	1500
		1.5/1.75				4600	1600
16	1250	1.0	1700x1600	1000x2100	2600x2200	4600	1600
		1.5/1.75				4700	1700
18	1350	1.0	1900x1500	1100x2100	2800x2200	4600	1600
		1.5/1.75				4700	1700
21	1600	1.0	2000x1700	1100x2100	2900x2200	4600	1600
		1.5/1.75				4700	1700

Note : Only for reference, final dimensions please follow GAD.

ERO-D-MR

construction parameters



Small machine room passenger elevator specifications

(人) Persons	(kg) Rated Capacity	(m/s) Rated speed	(mm) Door opening size		(mm) Car size			(mm) Hoistway size		(mm) Machine room size			(mm) O.H.H	(mm) PIT	(m) Max. travelling height
			C.W x C.D	Width	Depth	Height	Width	Depth	Width	Depth	Width	Depth			
8	630	1.0	800 x 2100	1400	1100	2400	2000	1700	2000	3000	2200	4400	1400	40	
		1.5										4500	1500	60	
		1.75										4600	1500	70	
10	800	1.0	800 x 2100	1400	1350	2400	2000	1950	2000	3400	2200	4400	1400	40	
		1.5										4500	1500	60	
		1.75										4600	1500	70	
		2.0										4900	1700	100	
		2.5										5100	1900	120	
13	1000	1.0	900 x 2100	1600	1400	2400	2200	2000	2200	3450	2200	4400	1400	40	
		1.5										4500	1500	60	
		1.75										4600	1500	70	
		2.0										4900	1700	100	
		2.5										5100	1900	120	
16	1250	1.0	1000 x 2100	1700	1500	2400	2300	2200	2300	3450	2200	4500	1400	40	
		1.5										4600	1500	60	
		1.75										4700	1500	70	
		2.0										4900	1700	100	
		2.5										5100	1900	120	
18	1350	1.0	1100 x 2100	2000	1500	2400	2600	2200	2600	2300	2500	4500	1500	40	
		1.5										4700	1600	60	
		1.75										4700	1600	70	
		2.0										4800	1700	100	
		2.5										4500	1400	40	
21	1600	1.0	1100 x 2100	1900	1800	2400	2500	2500	2500	3750	2200	4600	1500	60	
		1.5										4700	1500	70	
		1.75										4900	1700	100	
		2.0										4500	1400	40	
		2.5										5100	1900	120	

Note : Only for reference, final dimensions please follow GAD.