

# Modern Passenger Elevators for Mid-Rise Buildings

Elevate your Senses



**PASSENGER ELEVATOR**  
ERO-5-MRL/MR

# Better Technology Builds Better Elevator Systems

## Engineered Reliability

Perfectly matched control and drive motor systems make installing and commissioning elevators simpler and quicker. Multi parameter monitoring systems ensure minimal down time and rapid trouble shooting. Computer modeling and extensive testing of components assure maximum safety and reliability.

## Architectural Advantages

Compact machines allow for Mini MR or MRL to give architects and designers the power of choice to free up usable space and create beautiful building elevations.

## Eco Friendly and Energy Efficiency

Energy-saving **Permanent magnet** motors, and state-of-the-art inverter drives produce precise speed control while reducing energy consumption to never before levels. Next generation processor and software technologies reduce wait times for passengers and reduce unnecessary running of lifts, increasing the service life of equipment while reducing cost of ownership.



Save 40% energy compared with the traditional traction elevators.

Large torque, low noise, maintenance-free

Compact structure, convenient installation, save machine room space

## Technology Drives Elevator Performance

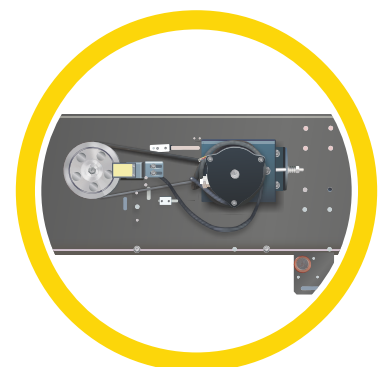
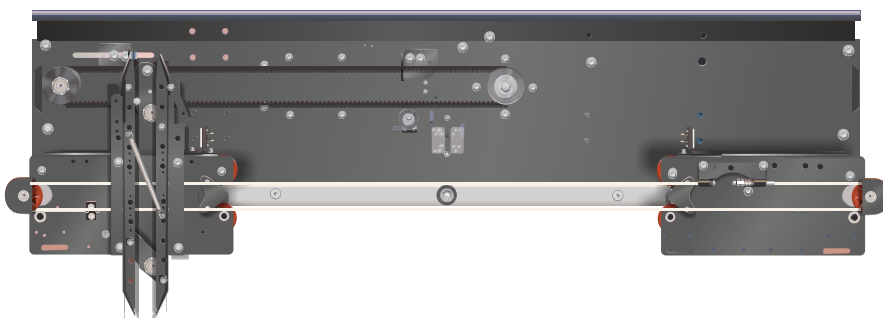
### State of the Art Elevator Control Systems

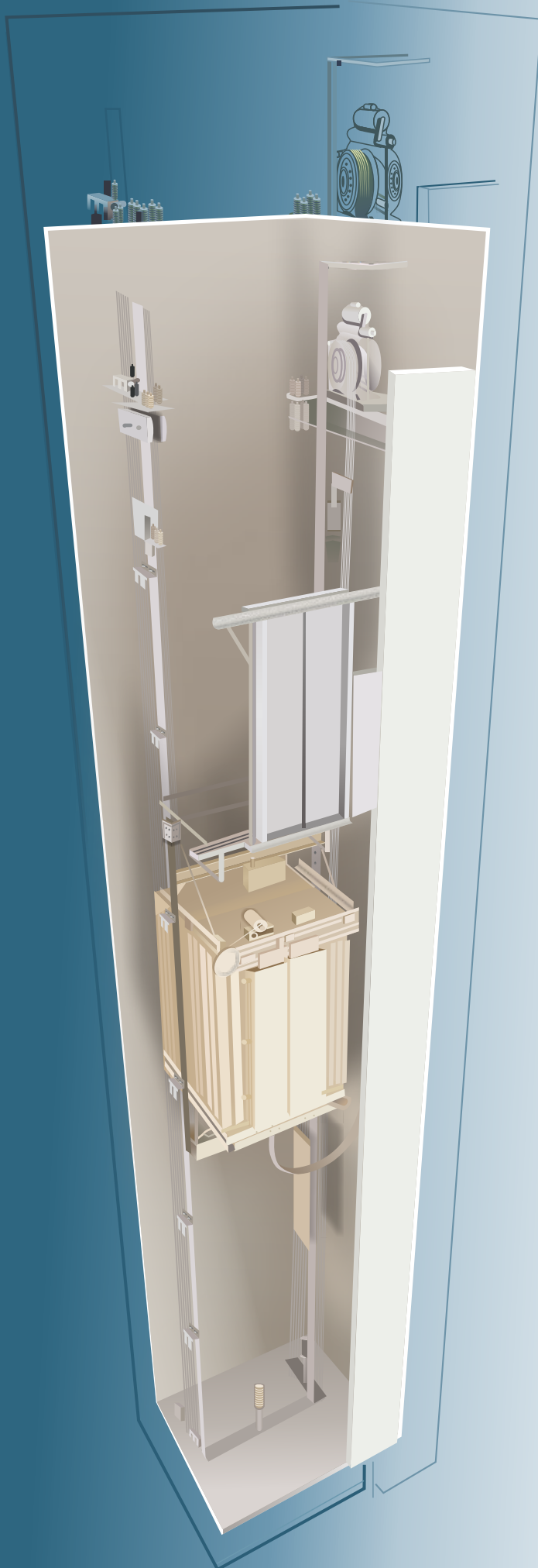
High speed 32-Bit digital processors and CAN BUS technology guarantee maximum safety, fast response time and enable advanced features such as

- Direct ramp to stop
- Self-learning functions to optimise wait times.
- Fault diagnosis and emergency operation under fault detection.
- Advanced VVVF drives using sophisticated Heidenhain encoders and complex algorithms supply power to motors, consume minimal energy yet control elevator movement with incredible precision.

### Whisper-Glide Elevator Ride and Door Performance

State of the art components designed with precise engineering and manufacturing tolerances impart to our elevators an unsurpassed ride quality and smoothness. Door operators with VVVF drives and contactless systems make for noise free reliable performance.

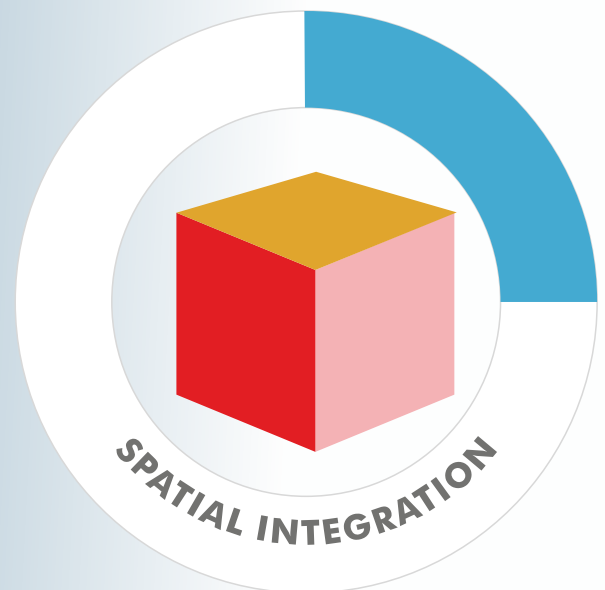




## ERO-5-MRL

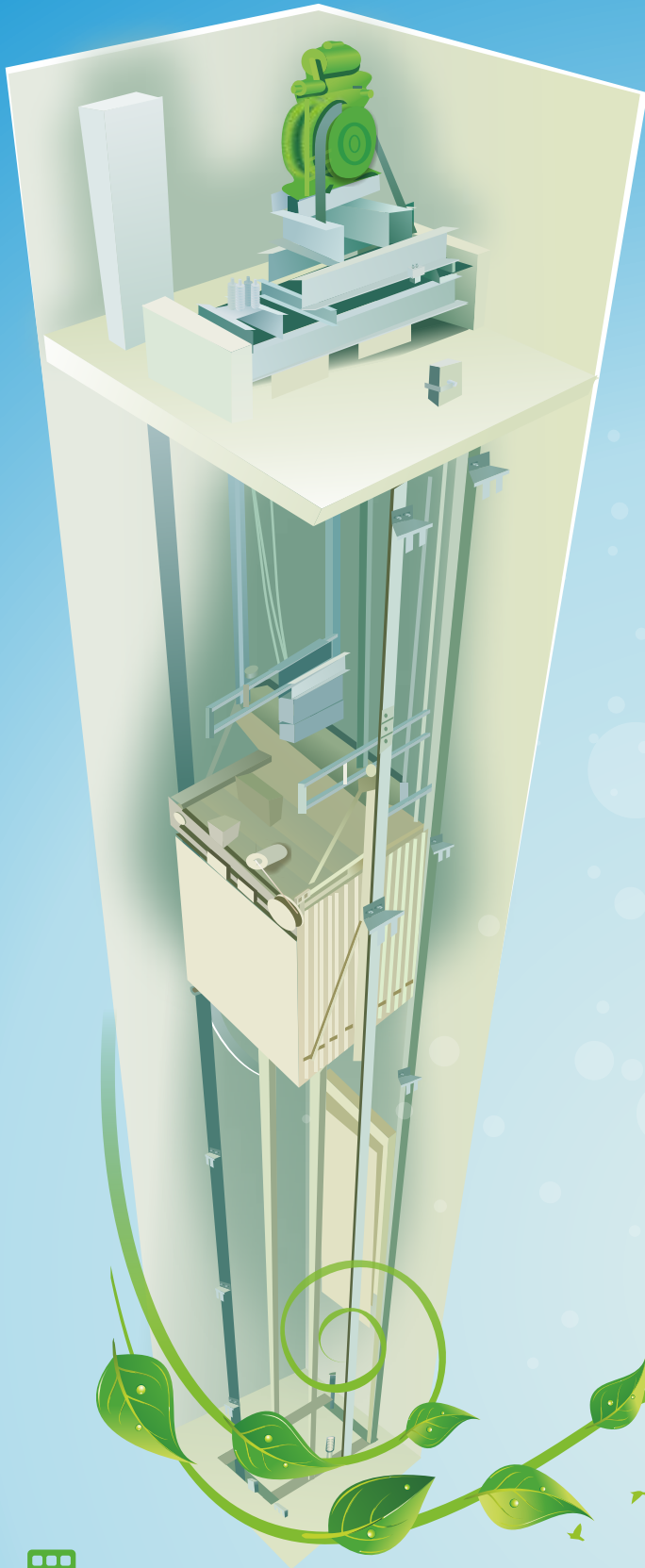
**Save Machine Room Space and Empower Your Architectural Vision**

Our Industry-Leading MRL solution incorporates an ultra-compact traction machine and other mechanical equipment neatly within the hoist way overhead space. An elegant control cabinet is fitted inside the front wall, adjacent to the top floor landing door.



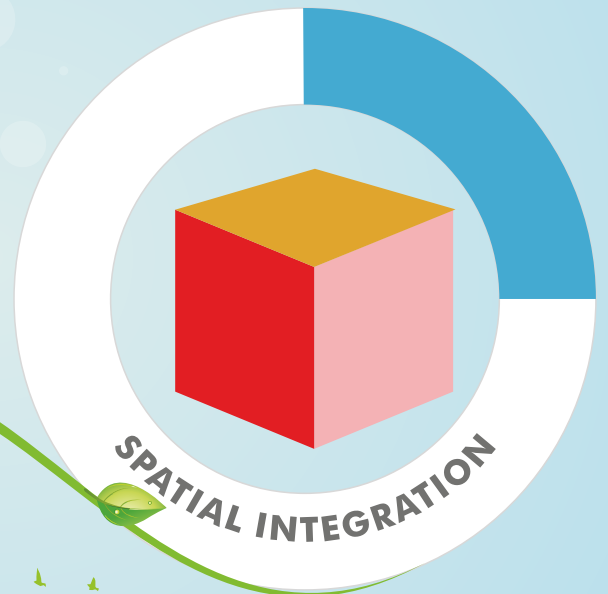
**Effectively save machine room area**



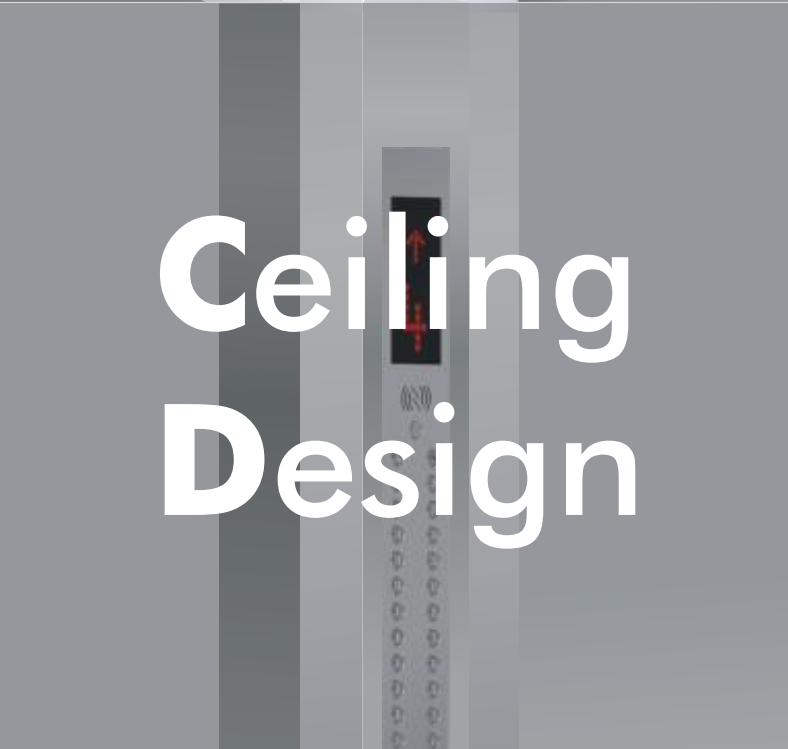
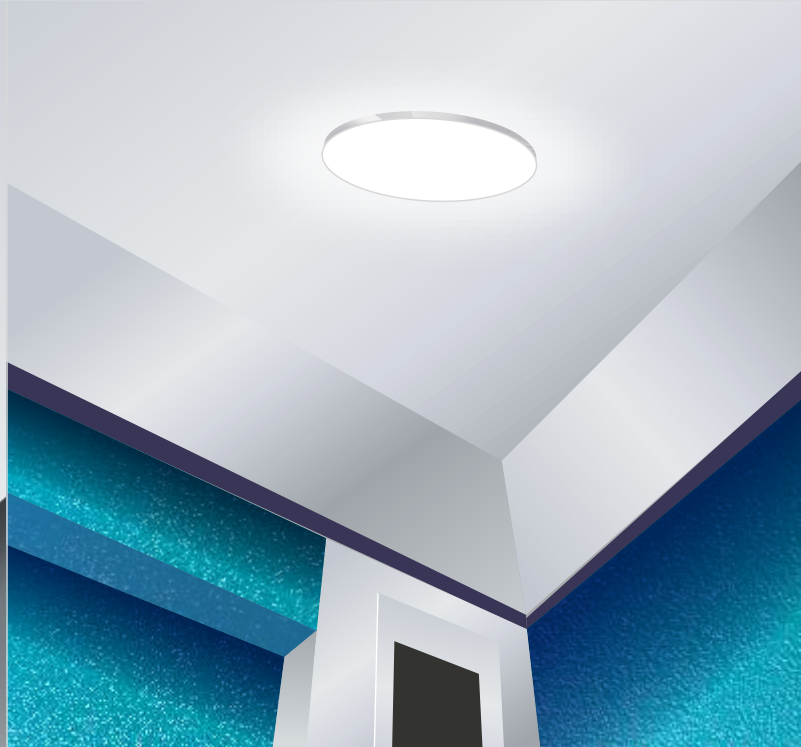


## ERO-5-MR

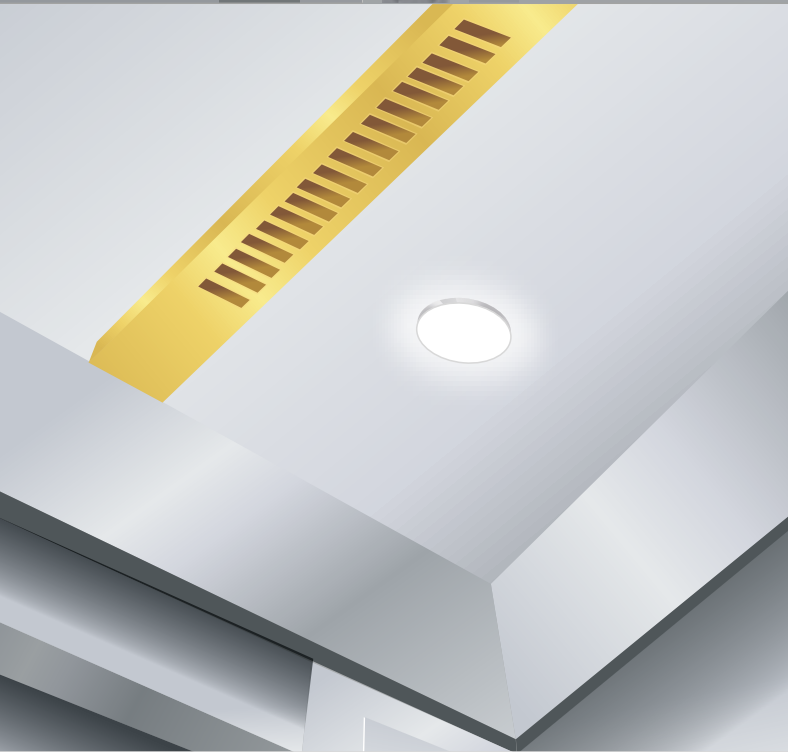
Our compact Mini Machine Room technology frees up space and eliminates cantilever construction while making convenient the servicing of equipment.



Effectively save machine room area



# Ceiling Design



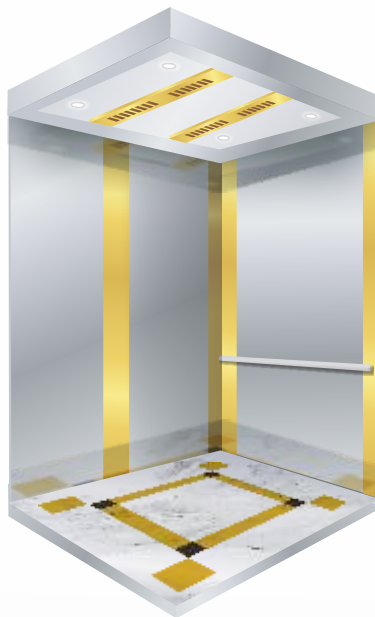
## Passenger Cabins

Cabin Panel finish with choices of Powder Coated Steel, Hairline Stainless Steel or Mirror/ Etched Stainless Steel.



**E18105**

Celling : E58002 ( Lighting decoration, mirror St. St. frame)  
Car Wall : Hairline St. St.  
Floor : PVC



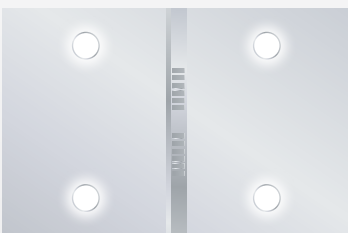
**E18202**

Celling : E58009 ( Lighting Decoration, mirror St. St. frame with down light at two sides)  
Car Wall : St. St. hairline with central panel on all 3 sides of mirror finish or etched.  
Handrail : E77010 (Hairline st. st.)  
Floor : PVC

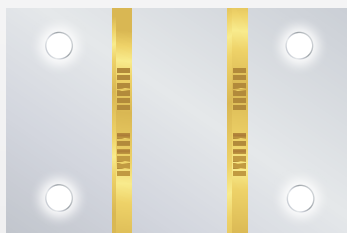


**E18706**

Celling : E58017 ( Hairline st. st.)  
Car Wall : Rear wall (Center Panel of etched mirror finish and additional panels of mirror finish side walls of st. st. hairline finish)  
Handrail : E77010 (Hairline st. st.)  
Floor : PVC  
COP : E18303



**E58002**



**E58009**



**E58017**



# Hall Design





## Landing door



**E20500**

Door Model : E20500  
Door Material : Hairline st. st.  
Narrow jamb : Hairline st. st.



**E20520**

Door Model : E20520  
Door Material : Mirror etched st. st.  
Narrow jamb : Mirror st. st.



**E20706**

Door Model : E20706  
Door Material : Mirror etched st. st.  
Narrow jamb : Mirror st. st.



**E20709**

Door Model : E20709  
Door Material : Mirror etched st. st.  
Narrow jamb : Mirror etched st. st.



**E20710**

Door Model : E20710  
Door Material : Mirror etched st. st.  
Narrow jamb : Hairline st. st.



**E20722**

Door Model : E20722  
Door Material : Ti-gold etched st. st.  
Narrow jamb : Ti-gold Mirror st. st.

# Signal Fixtures

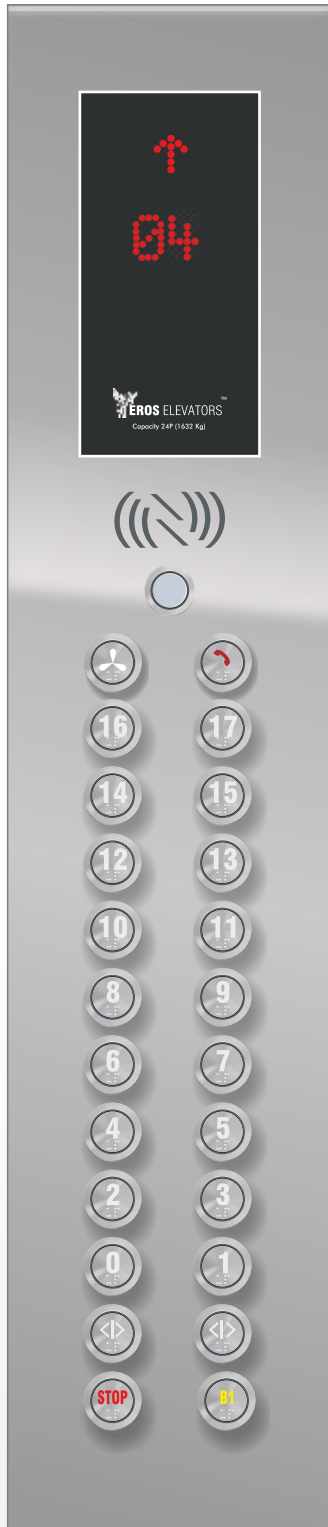


**EROS ELEVATORS**

Capacity 24P (1632 Kg)



# Signalization



**COP E18303**

Standard SS Hairline finish  
 Dot Matrix Display in Red  
 Option SS Mirror finish

7" LCD Optional



Direction Lantern  
**E18501**



Surface mounted LOP  
**E18401**

## Standard Features

Door Open & Door Close Buttons	Fire Emergency feature
Alarm Button	Adjustable Home landing
Overload Audio / Visual alarm	Full Load Bypass
Automatic "OFF" for Car light and Fan	Car Call Cancellation
Next Landing feature in case of non functioning of door	Next Floor Landing in case of Error (except power & Safety circuit)
Stuck Button check	Phase Failure & Phase Reversal protection
Battery Operated Emergency Car Light	Duplex Operation
Automatic doors with full safety curtain	Customized Floor Designation
Door Re-open feature from Landing button	Anti-Nuisance feature
Repeated attempts for Door Closing	Parking Floor selection
Adjustable Door Opening time at main Floor	Direct Landing for Single floor Run and Long run
Full Height Light Curtain with Multiple Light Beams	Motor Overheat Protection
Intercom 2 way	Night Security Floor
Fault Data Recording	

## Optional Features

Relevelling Feature	Building Management System Interface
Access Controller	Advance Door opening
Voice Announcement System	Door Nudging
CCTV provision	Group Operation up to 8 Car group
Parking Switch	Smart Call Allocation based on Load
LCD TFT display	Elevator Lock from COP
Second COP	Arrival Gong, Hall Lantern
VIP Services	Attendant & Independent Operation



**Handrails :**



E77001  
Hairline St. St. Curved Handrail

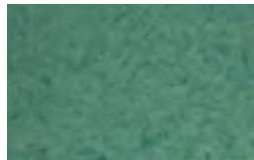


E77002  
Hairline St. St. Round Handrail

**Cabin Flooring**



E61001



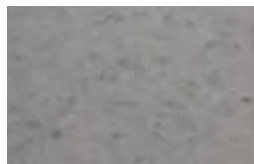
E61002



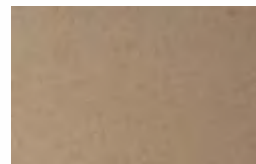
E61003



E61004



E61005



E61006

**Powder Coated Shade for Car and Door Panels**



ES5012



ES1003



ES7035



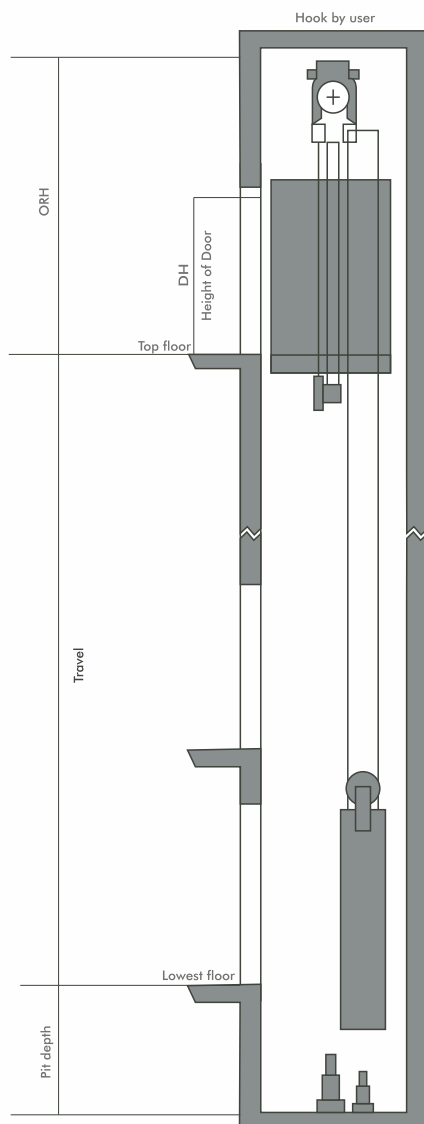
ES5018



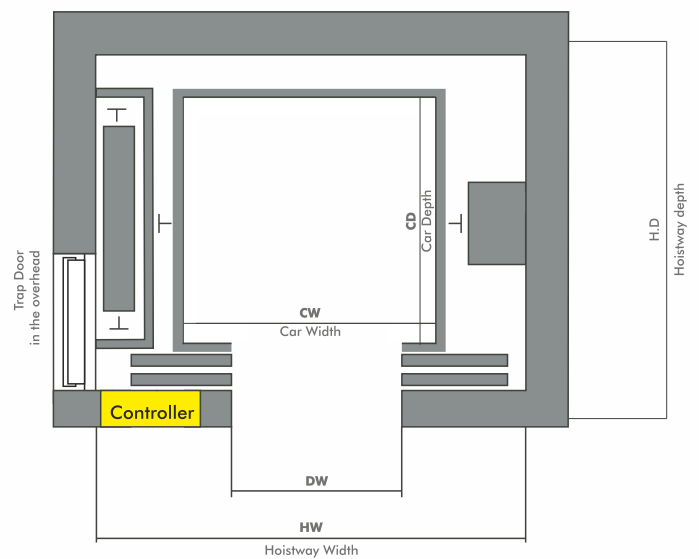
ES2002

# Hoistway layout

Hoistway vertical layout



Hoistway plan layout

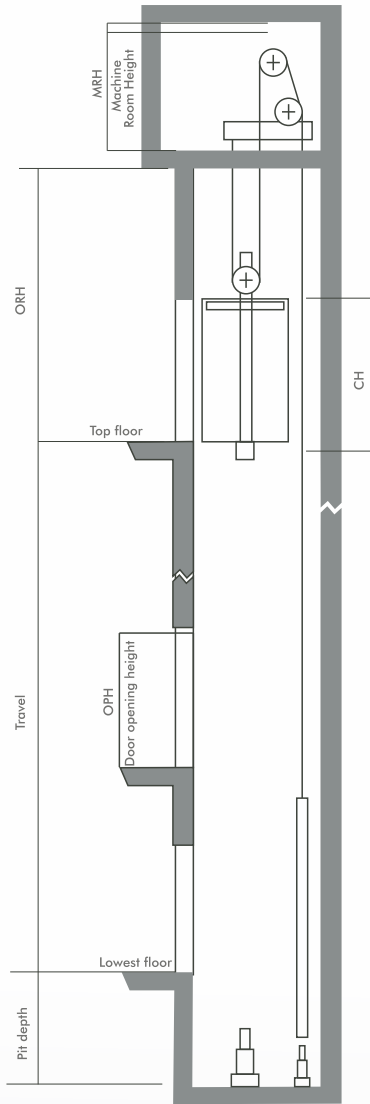


## Ero-5-MRL

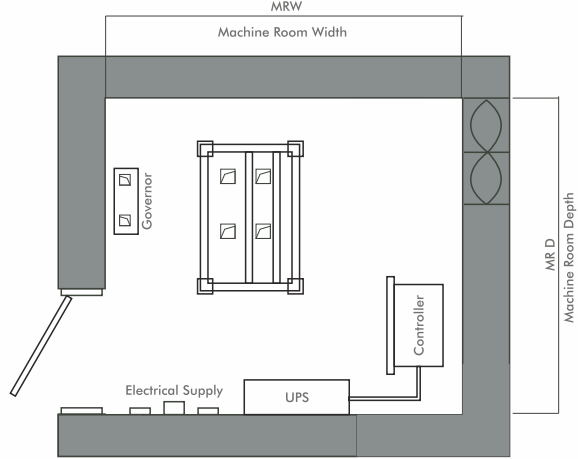
No. of person	Load in) (Kg)	Car Width mm	Car Depth mm	Door Width mm	Hoist way Width mm	Hoist way Depth mm
6	408	1000	1100	700	1825	1500
8	544	1300	1100	800	2075	1500
10	680	1350	1300	800	2150	1625
13	884	1600	1350	900	2450	1700
15	1020	1600	1500	1000	2450	1820

ESTD 1947

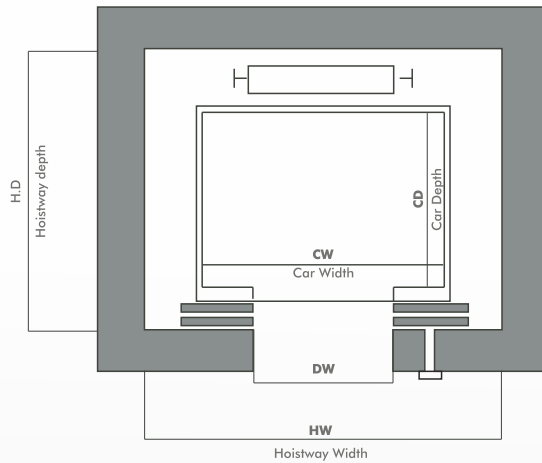
Hoistway vertical layout



Machine Room Plan Layout



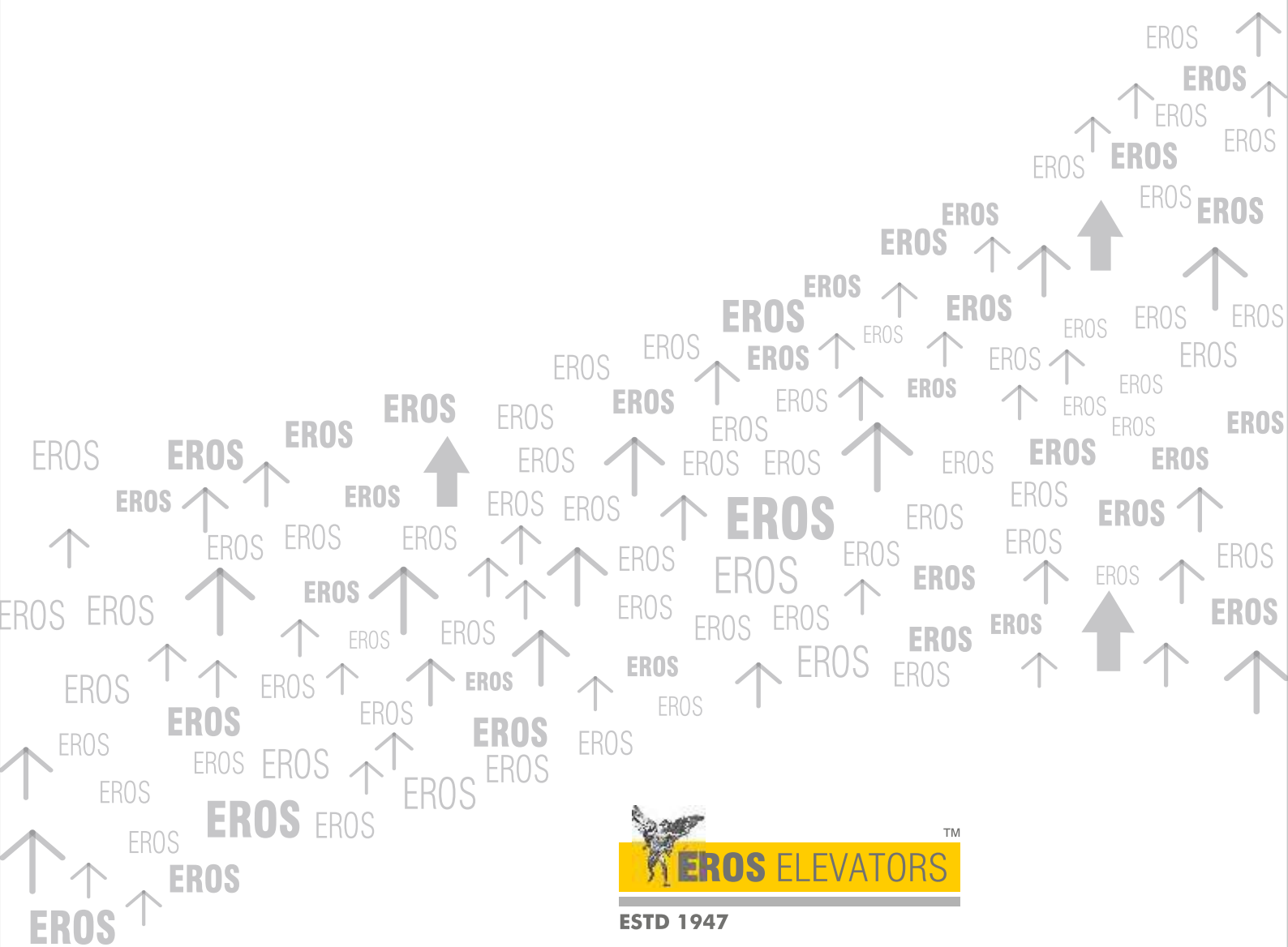
Hoistway plan layout



## Ero-5-MR

No. of person	Load in (Kg)	Car Width mm	Car Depth mm	Door Width mm	Hoistway Width mm	Shaft Depth mm
6	408	1000	1100	700	1550	1550
8	544	1300	1100	800	1700	1550
10	680	1350	1300	800	1750	1750
13	884	1600	1350	900	2000	1900
15	1020	1600	1500	1000	2000	2050
16	1088	1600	1625	1000	2150	2100
20	1360	1800	1725	1000	2200	2200

Maintenance Service Toll Free Number  
**1800 833 0230**



**ESTD 1947**

**EROS ELEVATORS & ESCALATORS PRIVATE LIMITED**

405, Bharat Ind. Estate, Tokarshi Jivraj Road,  
Sewree, Mumbai - 400 015. INDIA.

Tel.: +91 22 2413 2425, 2414 3231

Fax : +91 22 2415 3192

CIN NO.: U31909MH2010PTC200179

GST : 27AACCE3224D1Z6

<http://www.eroselevators.com>

Note : Because of restrictions in printing technology, there will be slight difference between colors in this catalogue & actual.

The brochure is only for your reference. Please refer to the respective technical documents as items may change due to continuous improvement.